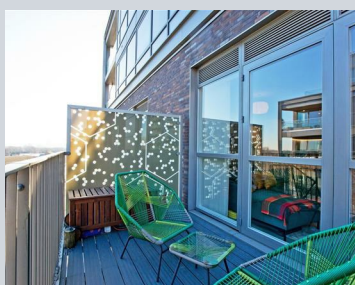


Coppermills

2 bedroom Apartment

Old Brewery way, London, E17

Offers in excess of £515,000 Leasehold



A stunning, spacious two-bedroom, two-bathroom apartment on the fourth floor of a modern development in the heart of St James Street, Walthamstow.

This well-proportioned apartment features two airy double bedrooms, including a master with ensuite. The open-plan kitchen/lounge area is spacious and opens onto a balcony overlooking the development's central courtyard. The current owners have thoughtfully arranged areas for relaxing, dining, and entertaining.

The kitchen includes fully integrated appliances, with abundant natural light throughout from the large balcony. There is also a second three-piece shower room, ideal for guests.

Building amenities include a concierge, two bike storage rooms, and a spacious communal roof terrace. The apartment is on a long leasehold, with service charges around £3380 per annum and ground rent of £400.

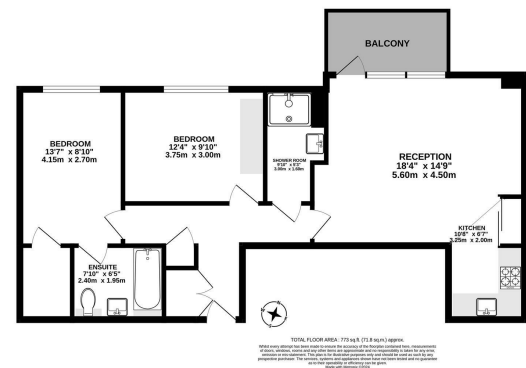
- Council Tax: LB Waltham Forest, Band C
- Lease: Approx. 245 years remaining

For further leasehold details, including service charges, ground rent, parking, accessibility, and utilities, please contact the agent.

To view this property
info@coppermills.co.uk
020 8509 9170

Old Brewery way, London, E17

The building benefits from a concierge service, two communal bike storage rooms, and a large communal roof terrace. This apartment is being sold on a long leasehold basis. Well situated for those who enjoy outdoor spaces, as it is walking distance to the Walthamstow Wetlands, a short journey into Epping Forest and there are some excellent cycle routes connecting you to central London along the canals. Planning approval for development of apartments at the St James street surgery please ask us if you require more details, apartment is not facing the area where works will take place.



EPC details

Energy Efficiency Rating	Current	Proposed	Environmental Impact (CO ₂) Rating	Current	Proposed
Very energy efficient - lower running costs			Very environmentally friendly - lower CO ₂ emissions		
92-95 (A)			92-95 (A)		
81-91 (B)			81-91 (B)		
69-80 (C)			69-80 (C)		
55-68 (D)			55-68 (D)		
49-54 (E)			49-54 (E)		
41-48 (F)			41-48 (F)		
35-40 (G)			35-40 (G)		
Not energy efficient - higher running costs			Not environmentally friendly - higher CO ₂ emissions		
86	86				
England & Wales	EU Directive 2002/91/EC		England & Wales	EU Directive 2002/91/EC	



info@coppermills.co.uk
 T: 020 8150 1177
 M: 077 8217 0925
 www.coppermills.co.uk
 63 St James Street
 London E17 7PJ

You may download, store and use the material for your own personal use and research. You may not republish, retransmit, redistribute or otherwise make the material available to any party or make the same available on any website, online service or bulletin board of your own or of any other party or make the same available in hard copy or in any other media without the owner's express prior written consent. The owner's copyright must remain on all reproductions of material taken.